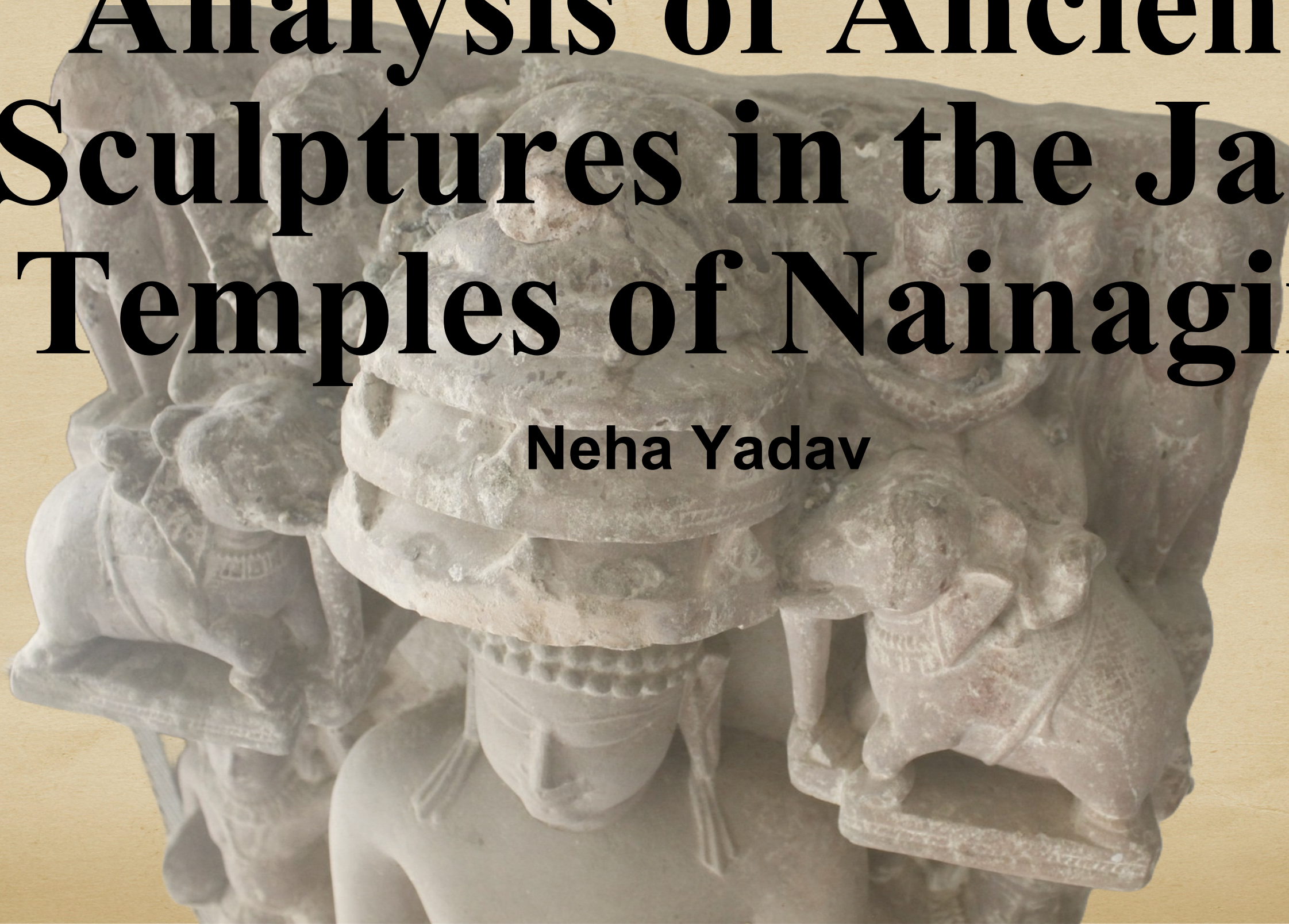
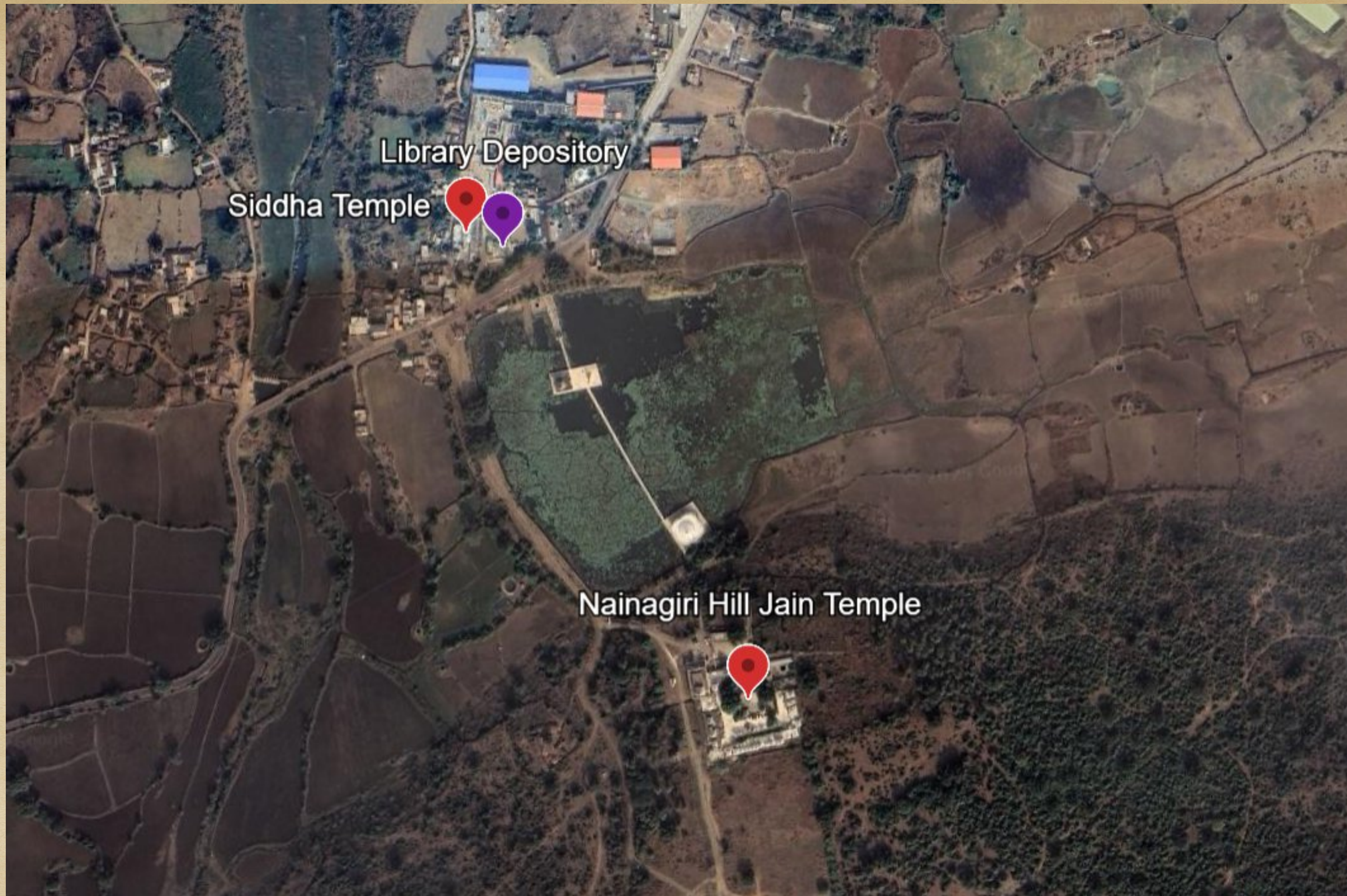


Analysis of Ancient Sculptures in the Jain Temples of Nainagiri

Neha Yadav





Google Earth Image showing the sites of importance.

The Site of Nainagiri

Known as Nainagiri/Reshandigiri in Chhatarpur district, Madhya Pradesh

Coordinates: 24°9'N, 79°7'E; elevation 470 meters

Nestled within Vindhyan Ranges

Part of Panna National Park and Baxwaha Forest Reserve

Located on northern bank of Semra Pathara River (tributary of Beban)



History of the Site

Situated within the ecological preserve of Panna National Park and the Baxwaha Forest Reserve.

Liberation ground of five munis.

The Mesolithic age of the site.

Continued patronage over the centuries.



Iconographic Attributes



Nainagiri Hill Jain Temple

Adinath



Housed in temple number 8.

Material- Sandstone.(78x44x20).

Vidhyadharas at the top corners.

Elephant doing Abhisheka symbolising supremacy and honor by all being.

Attendants on each side of the Jina.

Bull at the Lanchhana.

Simha at the pedastal.

Parshavanath



All Housed in temple number 37.
Sandstone(67x38x19 and 50x32x17).
Snake Hood and tail at lanchhana.
The Parikar are Curved, Rectangular
and Absent respectively.
Similar elements as Above.

Siddha Temple

Adinath



Sandstone(128x27x21)

Simple and Decorated Halo

Hair Style-Trijata(Multiple Locks).

Chauri bearer Attendants.

Similar elements as above.

Tirthankara



In Kayotsarg posture.

Made of Sandstone(106x43x25).

Missing Lanchhana.

Multiple Locks(Possibly of Adinath)

Parshavanath



Material- Sandstone

**Features- Smiling face, Sitting in
Padmaasan on Snake, Elongated Ears, 7
Headed Snake Hood
Nagiri Script.**

Parshavanath and Attendant



Measurement-(88x43x23).

Features-Five-headed Snake Hood.

Tri-chattra, Flanked by elephants.

Two small attendants near legs of Jina.

**Beautiful Attendant in Tribhanga. Simha
at the pedestal.**

Ajitnath



Measurement-(103x27x21).

Features- Kayotsarg

**Posture,Vidhyadahras at top, Tri-
chattr, Flanked by Elephants doing
Abhisheka, Elongated ears, Thick upper
lip, Attendants in Tribhanga, Elephant at
the Lanchhana. Simhas at the pedestal.**

Ambika



Measurement-(99x32x27).

Features- Sambhanga posture, Five hood snake, Plump, Necklace, Armband, Katiband, Uttariye, Anklet, She is holding a Child.

Library Depository

Gomedh & Ardhapriyanka



Measurement-(98x61x21).

Features- Sandstone, Ardhapriyanka posture.

Chandraprabh



Measurement-(44x34x17).

**Features- White marble, Padmasana,
pedestal has the symbol of moon.**

Tirthankar

a



Measurement-(16x12x4).

Features- Black Marble, lacking any clear lanchhana.

Adinath



Measurement-(150x78x41).

Features- Seated in padmasana on decorated pedestal, Dhyana mudra, Well-carved prabhamandal behind head, Srivatsa symbol, bull as lanchhana.

Parshavnath



Measurement-(61x41x23).

Features- Seated in padmasana, Dhyana mudra, Hair strands/lock touching shoulders, Srivatsa motif, Multi-headed naga canopy behind head, Left knee chipped

Acknowledgements

I want would like to thank the organisers and the officials from the IHAR Madhya Pradesh and Chhattisgarh chapter and State Museum Bhopal. A special thanks to my mentor Shivam Dubey and all those who have been a constant support.

**Thank
You**