

Archaeological Wealth of Sirsee Village

Yashraj Panth

(Research Associate-Sharva Purattav Solution Private Limited)

ABSTRACT

Sirsee, a small village in the Lalitpur district, holds significant archaeological potential owing to the wide distribution of material remains within its landscape. The village preserves a diverse range of cultural vestiges, including sculptures, temple remains, inscription, hero stones, later-period shrines, and a fort encircled by a moat. The village situated in close proximity to major Gupta and post-Gupta sites. Additionally, the nearby settlement of Siron Khurd (ancient Siyadoni), established during the Gurjara-Pratihara period along the Jhansi Bhopal trade route, situates Sirsee within a broader network of cultural and economic interaction. It occupies a strategic position within a culturally dynamic landscape. In light of these observations, the central research questions concern the documentation, origins and continuity of settlement at Sirsee. Despite this rich corpus of evidence, the historical trajectory of settlement at Sirsee remains undocumented, and no systematic archaeological or historical study has yet been undertaken but the sculptural wealth and peripheral sites indicates the earliest occupation of the village somewhat around 11th/12th century to till now.

Keywords: Sirsee, Siyadoni, Herostones, Fortress, Sculpture

INTRODUCTION

Sirsee is located in the Lalitpur District of Uttar Pradesh, India. It is 28 K.M. from the Lalitpur, 54 K.M. from Deogarh, 10 K.M. from Siron Khurd (Siyadoni) and 24 K.M. from Talbehat. The Village is surrounded by the important centres of the Gupta Period and Gurjara-Pratihara Period and Bundela period. It possesses a dynamic archaeological wealth in its landscape, total 7 different locations are identified where these archaeological materials are found. Most of the sculptures are in broken and deteriorate condition but the villagers are still worship them.



Google Earth

Image Landsat / Copernicus

20 km

Sirsee



Temple Complex

Broken Sculptures

Mahisasur Mardini Sculpture

Sirsee

Sirsee Fort

Broken Sculptures

Sati Stambha

Sirsee



Temple Complex

Broken Sculptures

Mahisasur Mardini Sculpture

Sirsee

Sirsee Fort

Broken Sculptures

Sati Stambha



Hero Stone



**Sculptural and temple
members**


Site 1



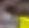
Site 2: Fort

Sirsee

Legend

 Sirsee Fort



 Sirsee

Google Earth

image © 2025 Airbus

30 m



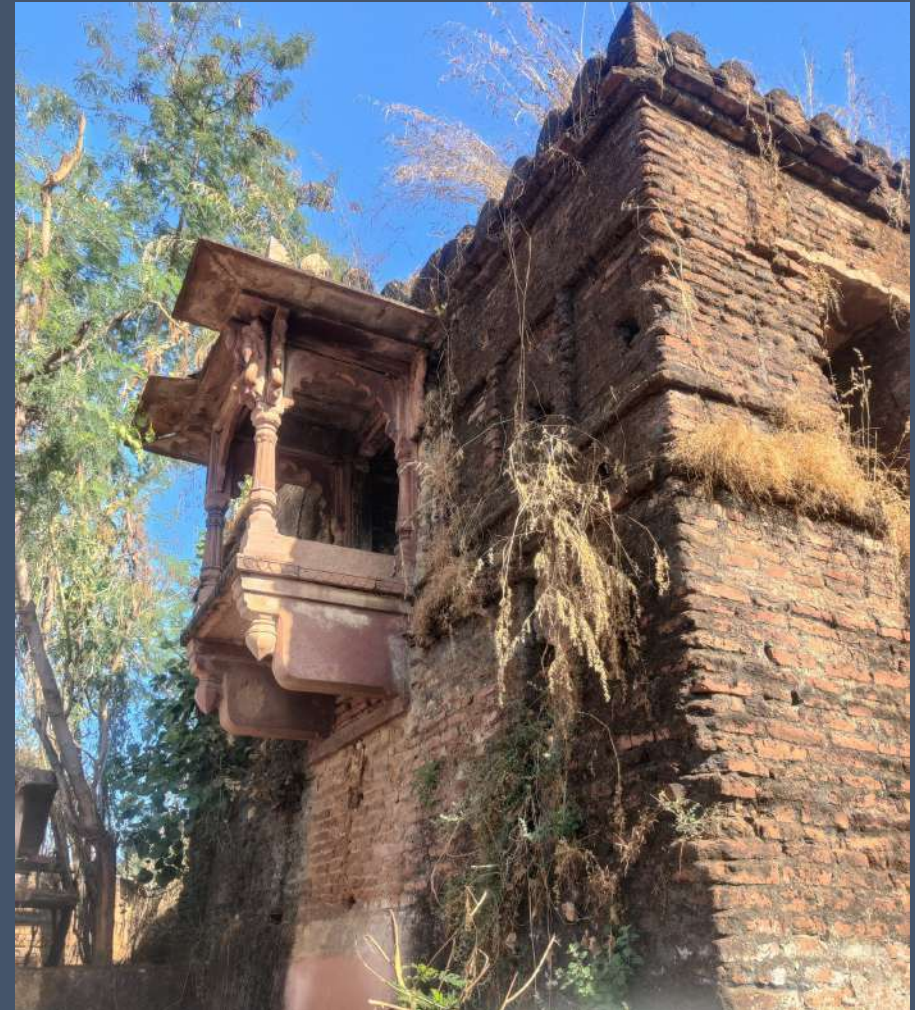




Surya

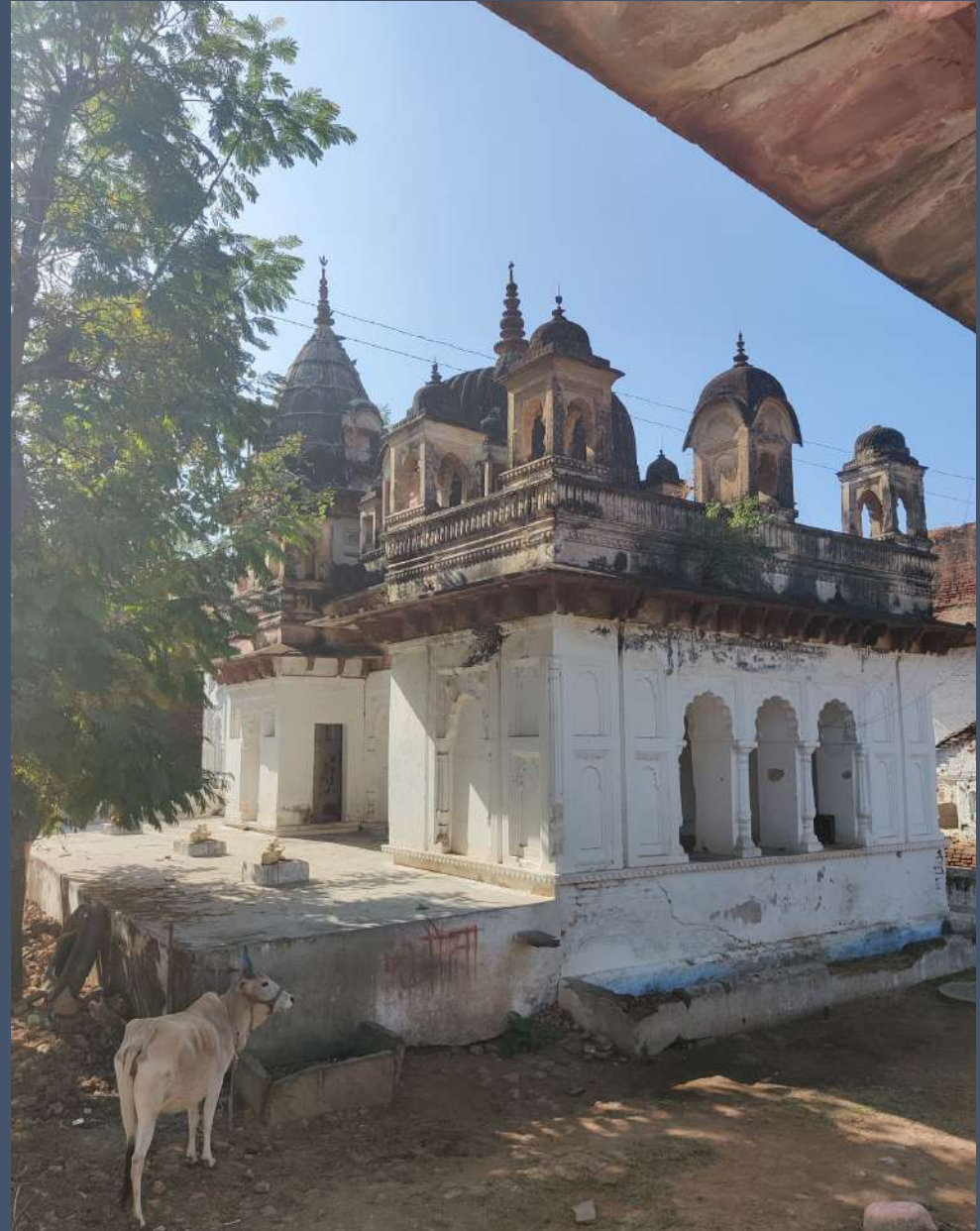


Ganesha



Bundela Style Jharoka







Mural Paintings



Site 3: Mahisasur Mardini



Site 4: Broken Sculptures



Broken Fragments of Hero-stone



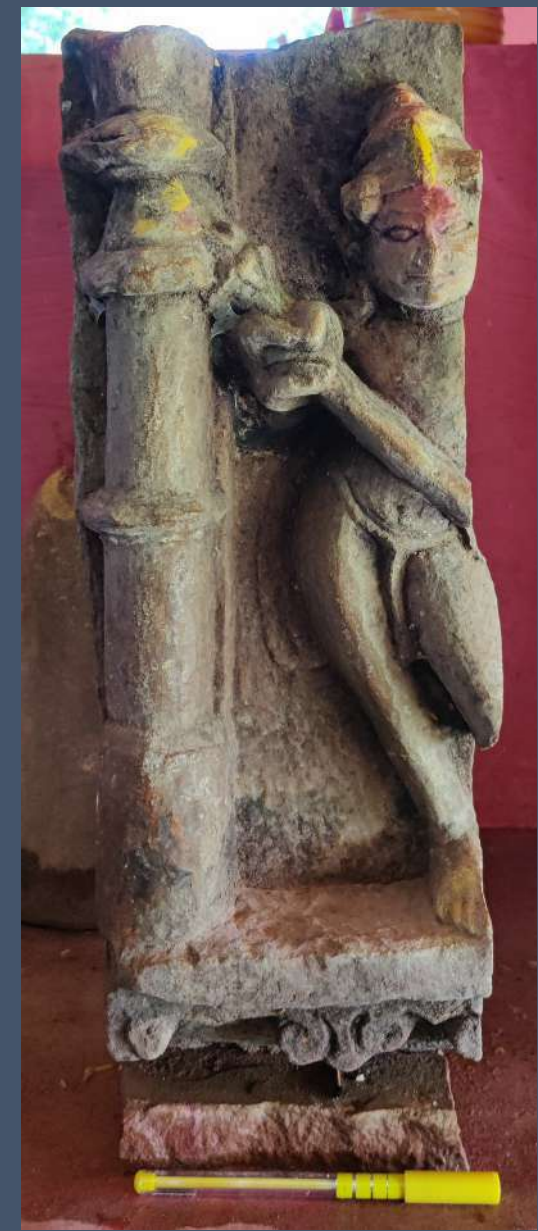
Inscription



Broken Sculpture of Hanuman



Temple Fragments



Site 5: Broken Sculptures Ruins







Site 6: Temple Complex

Discussion

What the occupation period of this village?

Why there is a fort?

Was there any importance centre of trade or worship?

Was there any war or battle happened?

Is this place is connected to the Gupta, Pratihara or Bundela Period?

THANK YOU